



# SEASON SUMMARY REPORT

**JAN 1, 2020 - OCT 8, 2020**

Prepared for [bakersacres2014@gmail.com](mailto:bakersacres2014@gmail.com)

Report generated on October 08, 2020

Prepared By [olson.ag.enterprise@gmail.com](mailto:olson.ag.enterprise@gmail.com)

# BAKER PIVOT

## GROWING CONDITIONS

Date	Rainfall (Inches)	ET (Inches)	Irrigation Rate (Inches)	Flow Meter
June 15 2020 June 21 2020	0.29	0.4	0	
June 22 2020 June 28 2020	0.38	1.05	0	
June 29 2020 July 05 2020	0.47	0.88	0	
July 06 2020 July 12 2020	0.21	0.55	0	
July 13 2020 July 19 2020	1.05	0.85	0	
July 20 2020 July 26 2020	1.27	1.45	0	
July 27 2020 August 02 2020	0.75	1.01	0	
August 03 2020 August 09 2020	0.38	1.21	0	
August 10 2020 August 16 2020	0.28	0.87	0	
August 17 2020 August 23 2020	0.53	0.45	0	
August 24 2020 August 30 2020	0.06	0.74	0	
August 31 2020 September 06 2020	0.01	0.17	0	
September 07 2020 September 13 2020	0.69	0.52	0	

# SENSORS

QR: 160525 (Uninstalled, June 10, 2020 - September 17, 2020)

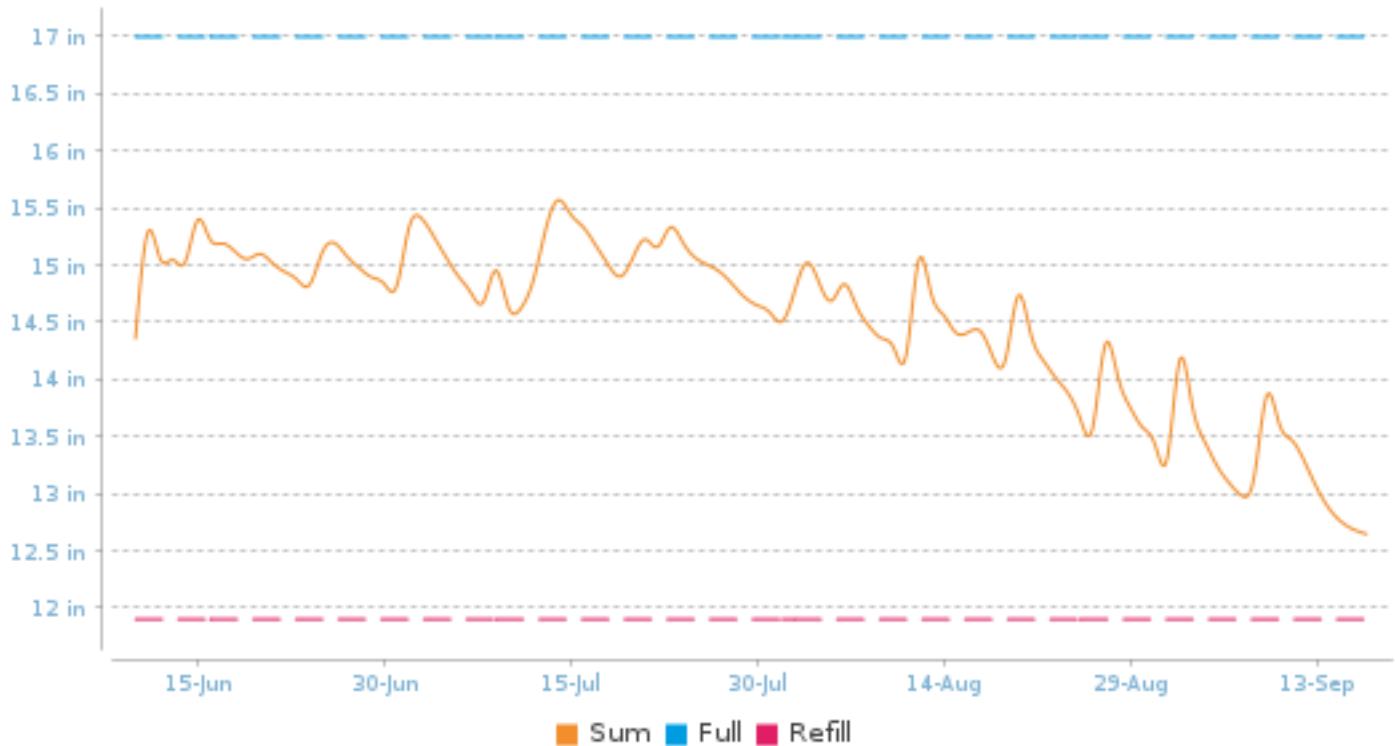
## LOCATION:

Lat: 40.24623 ,Long: -101.10883

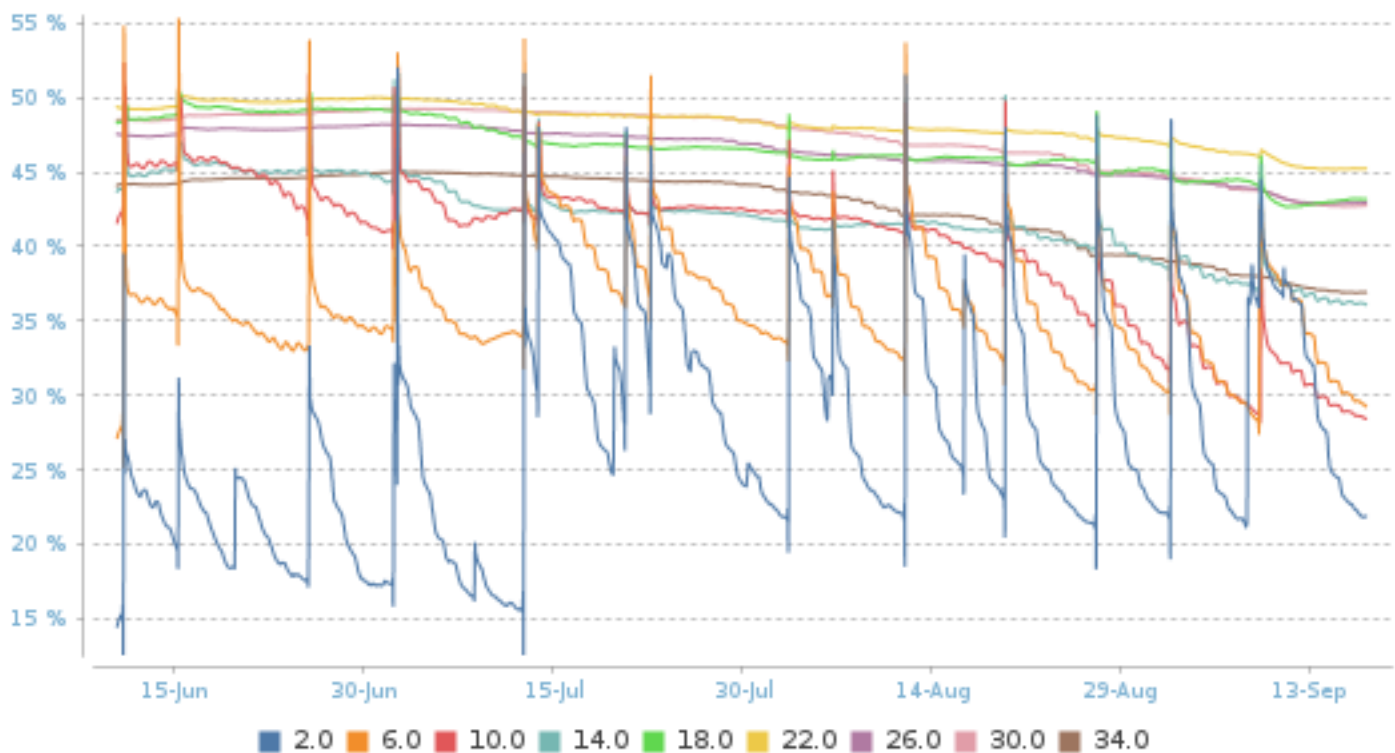
## SOIL TYPES

Depth	Soil Type	AWC
0	Sand	10.5
6	SiltLoam	10.6
8	SiltLoam	10.6
12	SiltLoam	10.6
18	SiltLoam	10.6
36	SiltLoam	10.6
48	SiltLoam	10.6
80	SiltLoam	10.6

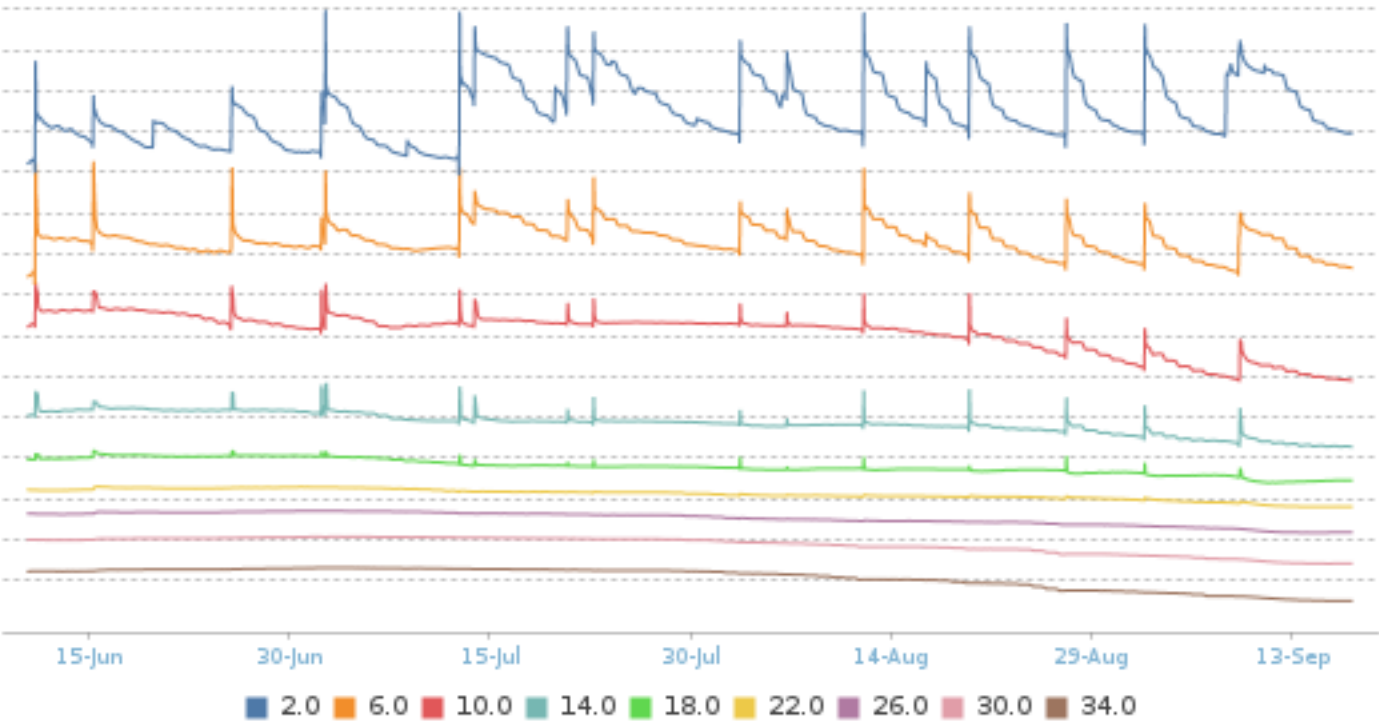
## Soil Profile Sum



## Measurements (%VWC)



# Stacked Measurements (%VWC)



## RECOMMENDATIONS

### June 17, 2020 - olson.ag.enterprise

#### June 17 rec

I set your your Full and refill points adn will continue to monitor and adjust throughout the growing season. Probe is showing 80% on the profile. Let's assume the future ET rates the end of this week will drop to seasonal averages, .1-.15" like it is forecasted. The forecast also keeps dropping precipitation chances for the weekend, 20-40%. If no precip this weekend lets look at starting the pivot early next week.

---

### June 24, 2020 - olson.ag.enterprise

#### 6-24 probe rec

Profile is in great shape at 86% full. Bottom 2ft are 90%+ and top foot is 75%. You have 8-10 days until the profile will hit refill line. Hold off on application until late in the week or early next week. Apply .75"-1" by next wednesday. If you watch the thesensors volumetric water holding capacity VWC% in a silt loam 50% is 90-100% actual holding capacity. Gives you a barometer to use as aguide.

---

### July 01, 2020 - olson.ag.enterprise

#### 6-30

85% profile after application late last week. 2nd and 3rd foot are in great shape, both at 90% and if you look at the the 30 and 34" sensor you can see an increase in VWC. This is an indication of pulling moisture from below, in the 4th foot. Profile has 6-7 days left until refill line. Look at applying anothe .75 tp 1" by weeks end.

---

### July 08, 2020 - olson.ag.enterprise

#### 7-8

85% profile again this week. Looking like sorghum is the right crop for 2020! Probe is showing your ET rates at .20-25" the last couple days. At 85% there is room for a rain in the profile but keeping it full enough to stay ahead. In the next week try to replace your ET rates with 1.5" application or a rain.....maybe

---

### July 15, 2020 - olson.ag.enterprise

#### 7-15

Profile is at 95% capacity. Rain put you ahead in the profile. Try to draw in back down to 80-85% and apply 1". ET rates at .2-.25" will draw down the profile to 85% by early next week.

---

### July 22, 2020 - olson.ag.enterprise

#### 7-21

Profile is at 89% and roots show usage at 26" sensor. Knowing some growers around you i suspect you missed the heavy hail. Hold off on irrigation until weekend or early in the week and applu 1". Should keep profile at 85%. What maturity is this variety?

---

### July 29, 2020 - olson.ag.enterprise

#### 7-28

Profile capacity in the high 80's. Hopefully receive a good rain wednesday and thursday. Definitely hold off until you know what rain is received. According to the sum graph ET rates are running .1-.15 per day. Even if no rain hold off on application until early next week

---

### August 05, 2020 - olson.ag.enterprise

#### 8-5

Pivot went over the probe on Monday. Profile is at 85% as of now and seeing roots in the 30" sensor, using full profile. Finish that pass if hasnt already and look to start later in the week. ET rates running .25" wuth setting

---

heads.

---

## August 12, 2020 - olson.ag.enterprise

8-12

Profile filled 1" last night due to rain or irrigation, or both. Profile is at 85% and good shape all the way through from 2"-34" sensor. Early next week apply .75-1" and keep profile close to 85% capacity.

---

## August 19, 2020 - olson.ag.enterprise

8-19

THird foot is drawing down and has depleted about 20% over the last week. PProfile is still in good shape at 82%. I am assuming crop is at Stage 7 soft dough. At that growth stage sorghum will need 5" of moisture to finish out to maturity. My recommendation is to leave profile at 75% capacity when crop matures. Helps on compaction issues but doesn't deplete profile for next spring. To hold to that rec the profile will need 3" to in the next 14 days to hold profile about 70%.

---

## August 26, 2020 - olson.ag.enterprise

8-25

After the application last week the profile is holding at 80%. Apply another 1" this week to hold at 80% and next week look at pulling down the profile. Let me what stage the crop is at.

---

## September 02, 2020 - olson.ag.enterprise

9-2

Pivot just passed over the probe. Sorghum will need at least another 2" to maturity. Profile has over 2" until refill line is met. Let's reevaluate next wednesday before make a decision on another pass or not.

---